



# Work Stand (IT2S)

ilkeen Work Stand has four telescopic foldable legs, which makes this product portable and ideal for any type of sawing job.

Each foot can be adjusted independently of other ones for optimal support.

the work surface is 98.5 \* 16 cm with a non-slip rubber mat for increased safety.

This product comes with a handy carrying handle.



## Technical specifications

Working Height:	80cm – 115cm
Capacity:	150kg
Footprint (Standing):	143cm – 50cm
Folded Dimensions:	98.5 x 16 x 6cm
Material:	Metal
Weight:	8.2kg



# Runway Roller Stand (430)

## Runway 430

This product is a low base rolling stand which is designed to work with large lighting fixtures .

Meanwhile 430 runway adds an extension column into the 1-1/8"(28mm) junior receiver which makes a mobile rolling stand.

The leg design allows the runway stand to be folded parallel to one another for easy storage and transportation.



# Runway Roller Stand (430)



## Data Sheet Runway Roller Stand:

Max Height:	24cm / 9.44"
Weight:	4.4kg / 9.70lbs
Footprint Diameter:	86cm / 33.85"
Stand Top:	U
Max Load:	70kg / 154.32lbs

## Data Sheet i160CS-Tube C-Stand Riser Column:

Closed Length:	100cm / 39.37"
Weight:	2kg / 4.40lbs
Stand Top:	16" 5.8 mm Fixing Baby Stud

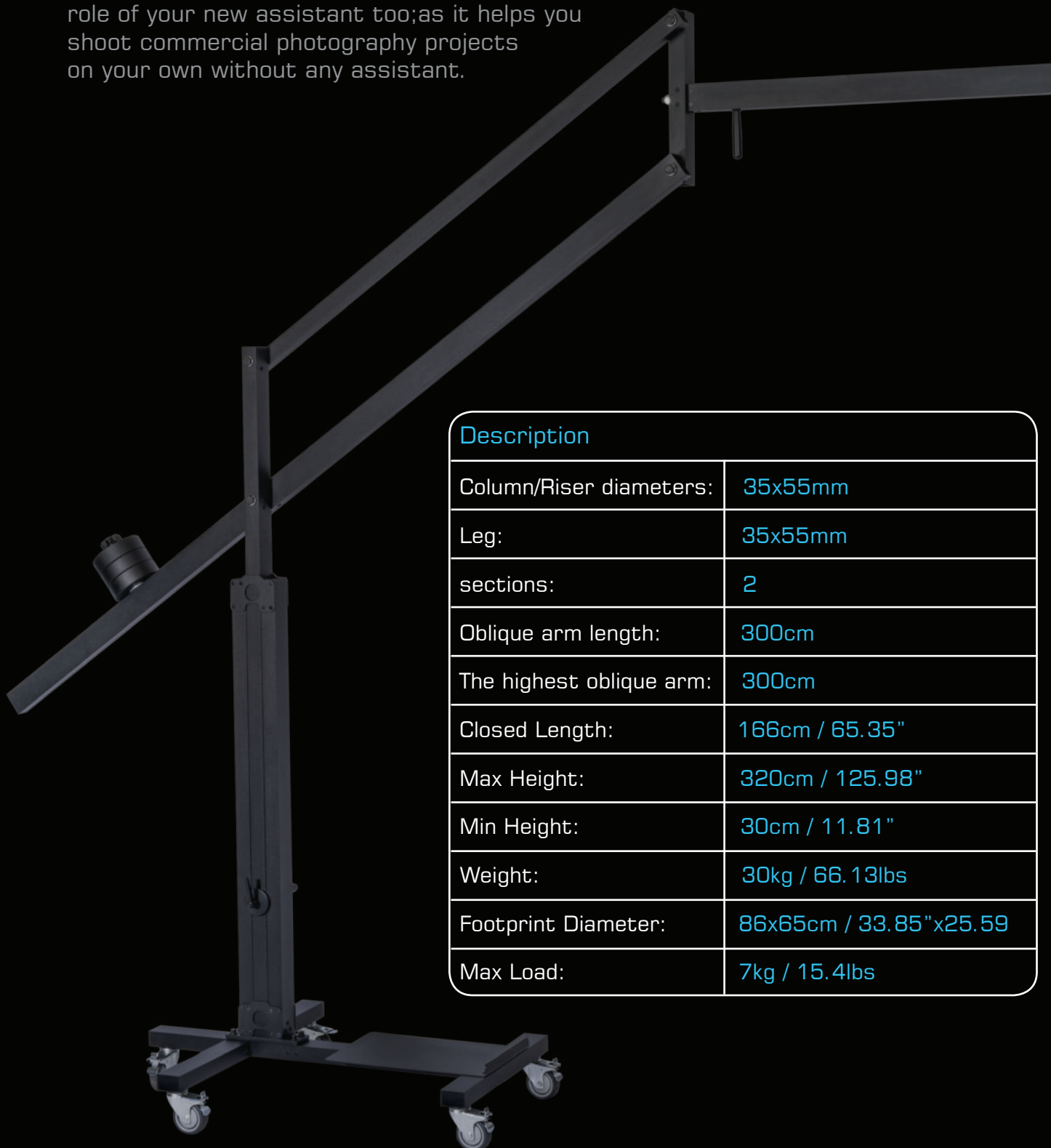


# Boom Stand (iB-5W45)

## Boom Stand

Mounting ilkeen boom stand on lighting stands can give photographers a table that moves horizontally and vertically.

This tool with the accompany of holders and clamps can make a professionally equipped studio for professional photographers, ilkeen Boom Stand, can play the role of your new assistant too; as it helps you shoot commercial photography projects on your own without any assistant.



### Description

Column/Riser diameters:	35x55mm
Leg:	35x55mm
sections:	2
Oblique arm length:	300cm
The highest oblique arm:	300cm
Closed Length:	166cm / 65.35"
Max Height:	320cm / 125.98"
Min Height:	30cm / 11.81"
Weight:	30kg / 66.13lbs
Footprint Diameter:	86x65cm / 33.85"x25.59"
Max Load:	7kg / 15.4lbs

# Camera PanHead (LCMS6)



## Description

Maximum Payload:	6kgs / 13.22lbs
Maximum Speed: Pan & Tilt:	360° in 15sec
Minimum Pan Speed:	Pan& Tilt: 360° in 30sec
Tilt Range:	Unlimited
Pan Range:	Unlimited
Power Input:	AC198V-220V, 50-60HZ
Control box power output:	DC 15V, 3A
Head Weight:	3.6kgs / 7.93lbs
Body Size:	W39 x H55 x D10cm

# Camera PanHead (LCMS6)



## Technical specifications

- Height adjustable to adapt axis
- Supports camera quick release
- Strong and durable
- Slow motion control possible
- Leveling devices for quick adjustment

## Camera pan head :(LCMS6)

ilkeen camera pan head provides smooth movement of pan and tilt. you can control the direction and speed, simply by a joystick on the remote controller . you can adjust the width and height to fit the size of your camera, or you can change the 15mm rods to make even a bigger remote head. This light weight extendable power pan head is perfect for all kinds of camera cranes, jibs tripods, heavy light stands etc etc Jibs, Tripods, Heavy light stand. With only 1/4 weight of most remote head, you can use lighter jibs and less counter weight. The perfect balance of camera can be achieved easily by high adjustment and sliding quick release.

# Camera Crane (iAONE)

ilkeen **Camera Crane** includes Motorized Pan and Tilt Panhead, Screen holder and Extra Weight System.

iAONE Camera Crane System provides a steady camera platform for starting videographers.

The system is delivered as a kit, iAONE partly mounted.

After the first set-up, supported by a very clear instruction, there is only one key necessary for quick mounting and de-mounting.

The boom system is modular extended and this way usable in at least three different set-ups.

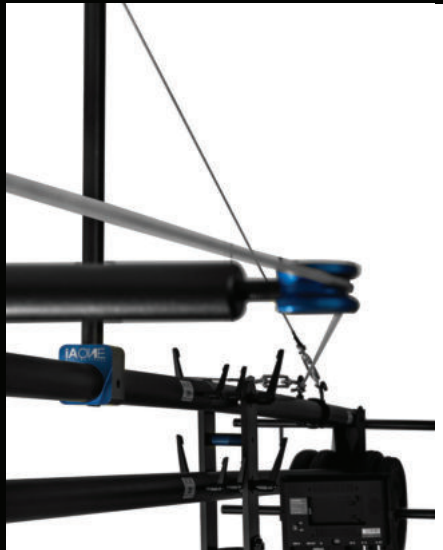
The central unit has four locking knobs for applying friction to the vertical boom movement and to make disassembling easier.

The central rotation platform has a low friction bearing system with a rotation brake. It fits to all 75 and 100mm video tripod cups.

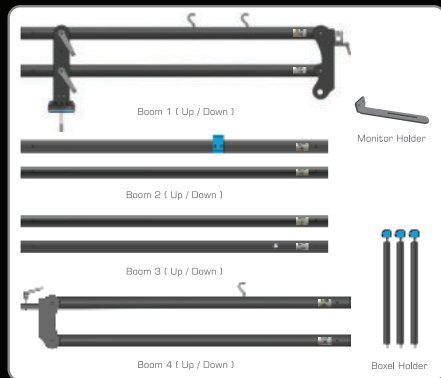
**The iAONE weight system is based on a set of standard fitness weights. The system is expandable and mountable as side weights.**



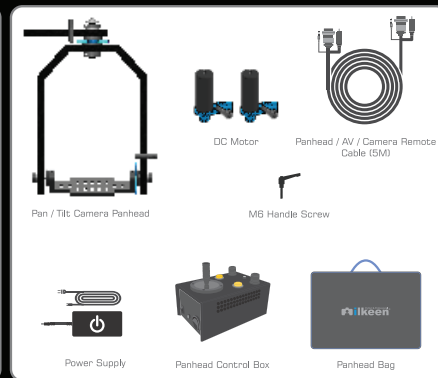
# Camera Crane (iAONE)



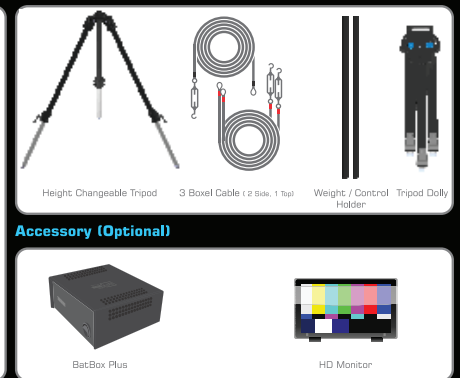
**In the box of Jib Arm**



**In the box of Panhead**



**In the box of Tripod and Dolly**



**Accessory (Optional)**



## iAONE JIB ARM

- Weighing Capacity of Jib: 15kgs / 33.06lb
- Jib Arm Reach: 4.8M / 15ft 9 inch
- Jib Arm: 4 Double Sections
- Jib Arm Material: High Grade Aluminum
- Finish: Black Powder Coated
- Pan & Tilt Range: Limited

## iAONE Pan/Tilt Head

- Maximum Payload: 6kgs / 13.22lbs
- Maximum Speed: Pan & Tilt: 360° in 15sec
- Minimum Pan Speed: Pan& Tilt: 360° in 30sec
- Tilt Range: Unlimited
- Pan Range: Unlimited
- Free Rotation: External
- Power Input: AC198V-220V, 50-60HZ
- Control box power output: DC 15V, 3A
- Head Weight: 3.6kgs / 7.93lbs

## TRIPOD STAND (FR-TS)

- Maximum Height: 140cm / 4ft 7.1inch
- Minimum Height: 69cm / 2ft 3inch
- Closed Length: 90cm / 2ft 11.4inch
- Weight: 6.7kg / 14.77lb

## DOLLY (FR-D)

- Dolly Width: 110cm / 3ft 7inch
- Weight: 6.1kgs / 13.44lbs



# Wall Mounted Light Stand Holder (W05)



ilkeen [W05 Wall Mounted Light Stand Holder](#), Holds 5 Stands. This holder does a heavy duty job.

## Wall Mounted Light Stand Holder:

- . Holds up to 5 stands including light stand and camera tripod.
- . This is an end to studio clutter
- . Great storage solution.

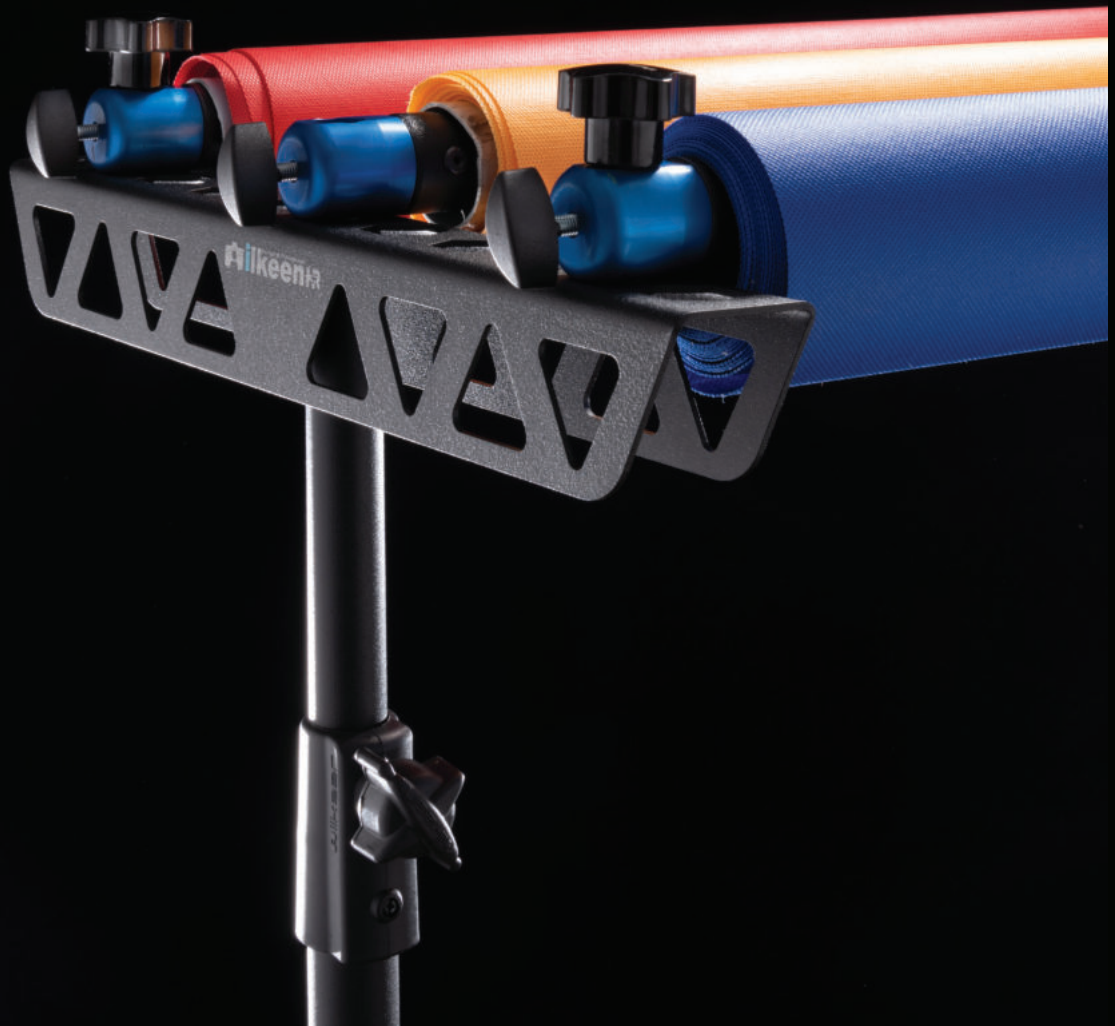
### Technical specifications

Product Dimensions:	657 x 97 x 150 mm
Product Weight:	2.7 kg
Holds up to	5 light stands



# Triple Crossbar Background Support Bracket

ilkeen Triple Background Support Bar Set, is very useful in a studio setting, this bracket is made to provide photographers easy background changes for their photo shoots; they can simply slide the backdrops back and forth to change colors of backdrops.



When it comes to using paper rolls you can just simply roll the paper up and down as needed to reveal the color you want to.

By placing on the top of standard light stands, a single setup can be used to hold up to three backgrounds.

# PRO Ri2 Reflector Holder

This telescopic magic wand can mount your reflectors, backdrops and all the rest. Thanks to the screw thread at the end of the arm, this device alternatively, can hold your cellphone, LED, etc. standstill, while recording time-lapse or shooting stop motion.



To maintain the weight balance, we have considered a savior hole, which you can hang the proper ilkeen sand pouch on, and you're good to go!

## Technical specifications

Mount:	16) "8/5 mm ) fixing and 20 - "4/1 screw thread
Max weight tolerance at its longest length:	4.4 lb
Min length:	4".37
Max length:	67"

Light weight , yet resistant formula to produce the highest quality possible.

Having a meticulous physical design, it has the capability to work in a wide angle (from vertical to horizontal).

As for the length we have considered full measure, to help the clamps move along the arm.

Although we have designed it in full measure, being telescopic gives you a well-set arm.

So you don't need to be worried, if you don't have much space for a cumbersome reflector holder.



# Background Support System (iA-BS2)

**ilkeen iA-BS2 Background Support System** Kit is ideal for travelling Photographers & videographers. It is portable & durable and can hold backdrops up to 12kg in weight.



## Background Support System (iA-BS2)

- Perfect Lightweight Iron Tripods, Solid Safety 3 Legs Stages, Premium Quality Support Bars, Height Adjustable: Min 115cm to Max 280cm Width Adjustable: Min 210cm to Max 315cm Holds canvas, muslin or paper
- It is suggested to secure the stands with gaffer tape, or weight bags when using any background setup where there are several people, or active children on the set.
- A collapsible and lightweight background support system can be invaluable. You can get this good ilkeen iA-BS2 Background Support System without breaking the bank, and the Impact Background Support System is no exception.

# Background Support System (iA-BS2)



## Technical specifications

- Background Support system comes with a high quality carrying case.
- Carrying case for backdrop stand is included.
- One background stand support system has max 280cm height 315 cm width

**This background kit is  
great for both studio  
and location work**

# Binar Assist Kit

This product is an indefatigable teammate for the professional photographers under all conditions.

With boreholes of different sizes ( 38 Nos. M8, one 8.3"» and one 4.1"» one can move various equipment and devices just like jigsaw puzzles and with easy and fast assembling of this gadgemany devices and parts such as power, Hard Disc , RAM reader bank and any other components or facilities, that are required for a professional photographer for connecting to a laptop, can be put together for high level precision work.



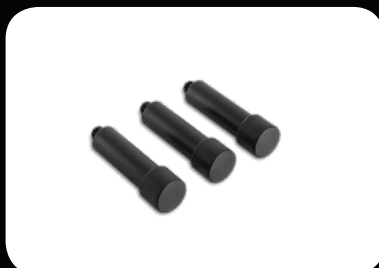
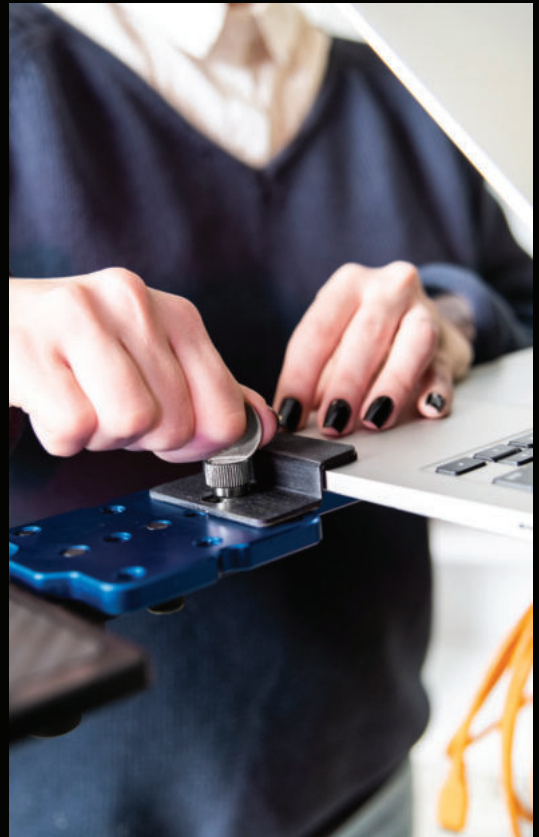
- Various accessories, such as power bank, external hard drive, and RAM reader, etc. has caused professional photographers as well as all who deal with these tools facing a huge mess wherever they work.
- However, a disciplined and peaceful work space may have a significant positive effect on their performance quality.
- Binar Assist Kit can accommodate your laptop and all its accessories in the smallest studios. For example, arranging lighting tools take a big effort and sometimes is even impossible.
- Tethering is made safer using less space when using this product, which enables photographers to see the details on the laptop bigger simultaneously and permanently avoid looking at the back of the visor and/or eventually, the camera LCD under harsh conditions.



# Binar Assist Kit



- Binar Assist is made from a high quality and resistant aluminum alloy.
- Notably, this device may easily and unlimitedly be mounted on all types of camera tripods, flash tripods and rolling stands.



## What's included?

1	1 Pcs Soft Case
2	2 Pcs Binar H Base
3	1 Pcs Binar M Base
4	1 Pcs Binar Base Mount
5	3 Pcs Binar Legs
6	1 Pcs Binar Hanger
7	3 Pcs Binar Universal Clamp
8	2 Pcs Binar Macbook Clamp
9	6 pcs Binar Clamps Screw
10	6 Pcs M6 8mm Screw
11	6 Pcs M6 12mm Screw
12	2 Pcs M8 16mm Screw
13	1 Pcs M6 Allen Range
14	1 Pcs M8 Allen Range

## Conical Snoot (CSR65)



CSR65 is a light shaper that helps reduce the flash's beam angle for precision lighting.

With an all metal construction, the Conical Snoot fits all Bowen mount flashes or LEDs.



## Conical Snoot (CSR65)



ilkeen Conical Snoot CSR65 is a light shaper that helps reduce the flash's beam angle for precision lighting.

The Conical Snoot mounts directly to the head and uses its cone shaped to reduce the beam's intensity to a small soft spot.

The size of the spot can be changed by moving the lamp closer or further from the subject, and from a circle to oval shape by adjusting the angle.

### What's included?

- Conical Snoot
- Changeable Degree Honeycomb 20
- Spring
- Height : 250 mm
- Span of light : 65m



# Monitor Bracket (PRO MOUNT)

ilkeen PRO MOUNT Monitor Bracket for Stands holds monitors up to 80lbs (35.5kgs) and can be mounted on common C-stands and light stands utilizing the standard 5.8» baby junior pin. The VESA Compliant mount is made of aerospace aluminum and features 5.8» studs .



ilkeen [PRO MOUNT Monitor Bracket](#) for Stands enhances photographers and videographers capabilities by providing a streamlined way to mount large monitors to studio stands utilizing the standard 5.8" (16mm) Baby/Junior pin found on common studio support equipment allowing for easy integration into any set-up.

The [PRO MOUNT Monitor Bracket's](#) easy and portable set-up is engineered for in-studio or location tethered image or video display as well as educational forums, tradeshow visual displays and weddings/events where video and slideshow playback is needed. Ideal for still photography, LiveView or HD video/slideshow playback.

The [PRO MOUNT Monitor Bracket](#) mounts directly on any 5/8" (16mm) Baby Junior pin so it's easy to use with any existing roller stand, C-stand, arm or clamp. Use a roller stand to reposition monitors as shooting angles and conditions change. The PRO MOUNT Monitor Bracket easy rotation of the monitor from landscape to portrait depending on current needs.

The [PRO MOUNT Monitor Bracket](#) mounts directly on any 16mm (5.8») Baby Junior pin so it's easy to use with any existing roller stand, C-stand, arm or clamp. Use a roller stand to reposition monitors as shooting angles and conditions change. The PRO MOUNT Monitor Bracket easy rotation of the monitor from landscape to portrait depending on current needs.

# Monitor Bracket (PRO MOUNT)



## Technical specifications

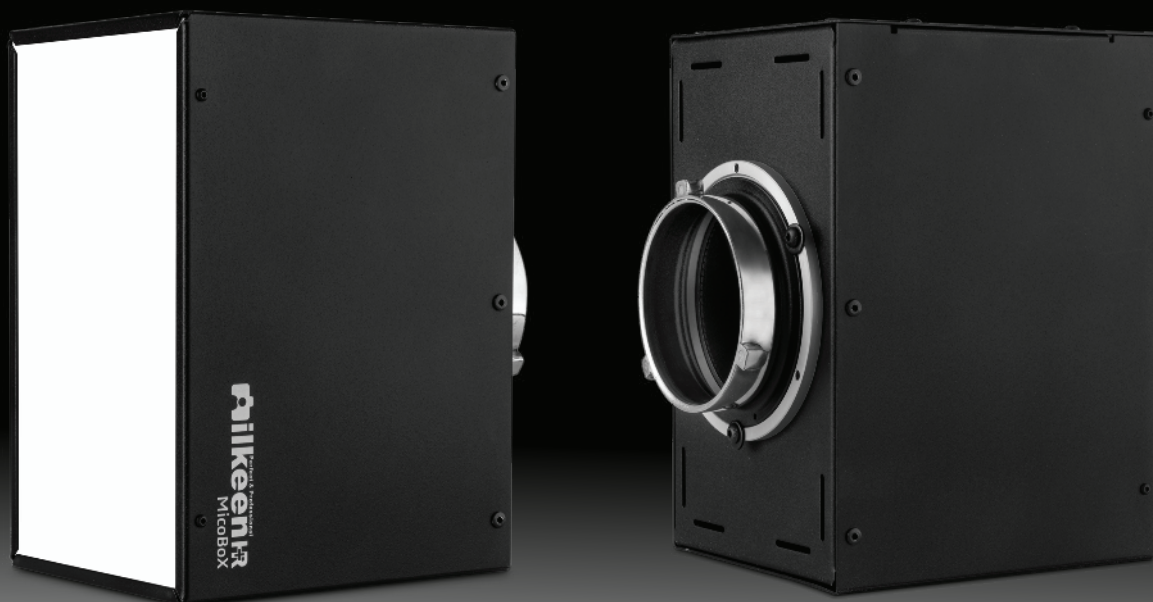
Maximum Capacity:	80lbs (36.5kg)
Mounts to:	16) 5.8mm) Baby Junior Pin found on grip stands, arms & clamps
	VESA compatible with 75x75mm & 100x100mm monitors
Made of:	aircraft grade aluminum
Can accept:	two 5.8 and one 16) 3.8mm),20) 1.4mm) accessory arms or mounts.
Color:	Non-reflective black finish
Monitor tilt:	±90°
Weight:	1.67lbs (0.75kg)
	Monitors can be easily rotated from landscape to portrait
	Folds flat for easy transport

# MicoBox

As a product photographer, you need to be in absolute control of the highlights.



# MicoBox



The MicoBox is a hard-sided light former with a frosted acrylic front creates an absolute monotonic light on a shiny surface, without a hot spot, giving photographers excellent control over product and still life highlights.

Unlike a softbox, where you have a large light source with a gradual fall-off and soft edges, the MicoBox gives you a smaller, perfectly even edge to edge light surface with razor sharp edges.

Its compact size is excellent for jewelry and timepiece Photography.

## Technical specifications

Size:	(6 x 9.8 x 7.25) (15 x 25 x 18.5 cm)
Shape:	Small Rectangle
Compatibility:	Any Flash Heads
Removable Front Face:	Yes
Accepts Grids:	No
The Mount In The Package:	Bowen Mount



# Rod 19L60

By installing this product on your light tripod you will be able to mount your ilkeen rod 19 mm.



## Description

- . **Pair of 19mm rods**
- . **Light weight black anodized aluminium**
- . **Textured finish reduces reflection**



You can easily mount your accessories such as ilkeen's Rod Clamp 19 FR on this ilkeen rod set.

The material used for these is the finest aluminum alloy in black, which makes the light weight yet resistant to bend, impacts, corrosion.

Additionally the matt finish of the rods not only reduces possible reflections but it helps increase smoothness for positioning accessories with minimal fuss.

This Third, Like Arm Moves Your Light And Your Camera Anywhere In Your Studio.  
gives you the maximum and accurate power of a Studio Light, Camera, ... in a short time.  
This accessories rotates at 180 iBoom H3 degrees with a radius of 230cm and has the best lighting, picture and video record quality



## Rod 19L60



This Third, Like Arm Moves Your Light And Your Camera Anywhere In Your Studio.

gives you the maximum and accurate power of a Studio Light, Camera, ... in a short time.

This accessories rotates at 180 iBoom H3 degrees with a radius of 230cm and has the best lighting, picture and video record quality



# iPipe Light

## Description

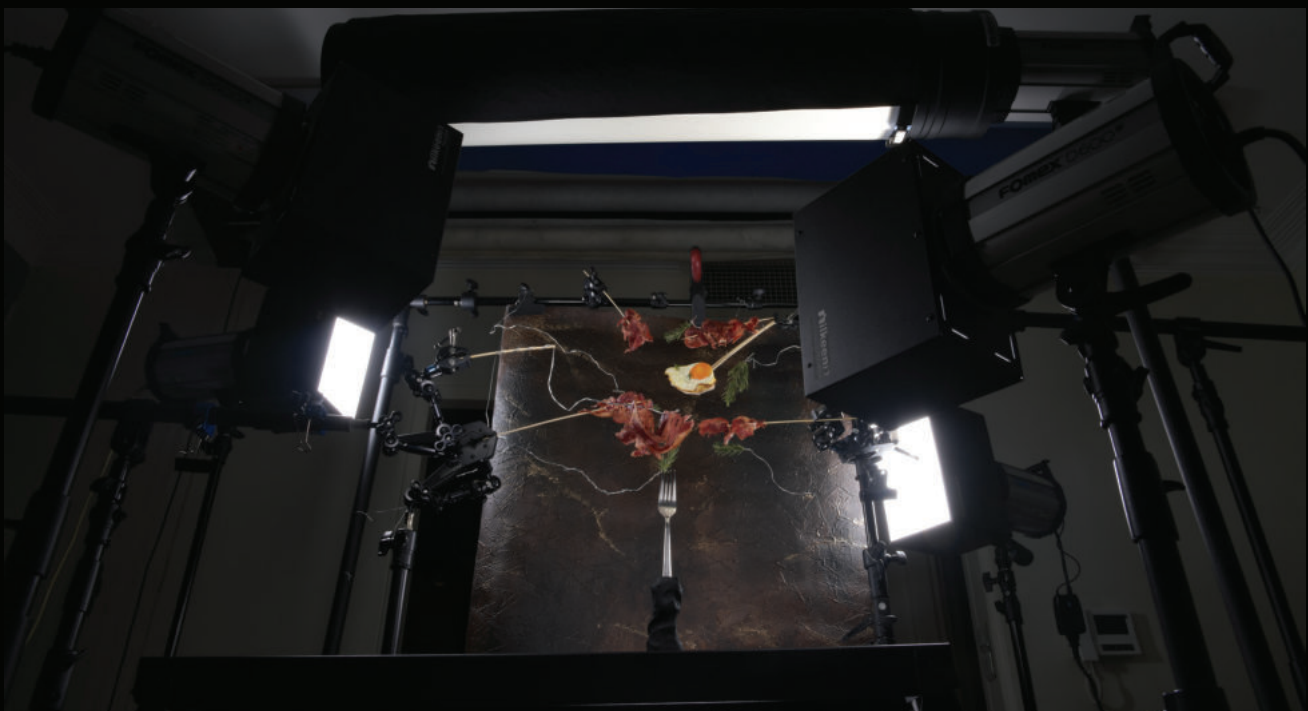
**Small Package, Easy to Use** This compact ilkeen light modifier is a genuine innovation in adaptability. Whether you are dealing with cramped surroundings or low ceilings, in a studio or on location, you can adapt ipipe light to any spatial situation. It is so simple you can assemble it in an instant, have no need for a boom stand, and can pack it away quickly too.

### Controllable 360-Degree Beam Spread

The ipipe light combines the functions of a range of light modifiers in a single unit. The unique 360-degree light output enables uniform illumination. With ipipe light, the two counter reflectors, with which the angle of the light can be individually adjusted, ensure ideal illumination for portraits, food, still life, fashion, interior and advertising photography. In addition, you can choose between soft, hard, and indirect lighting to achieve special effects.

### A Real Problem Solver

Due to its asymmetric design, the ipipe light has no need for a boom stand or for ceiling mounting. Equipped with the proven Bowen mount, ipipe light is compatible with the following any Bowen mount heads.



# iPipe Light

With coverage and functionality to match its unique shape, the ipipe light for any Strobes from ilkeen is a great solution for tight locations and single light shooting in architectural, portrait, fashion and advertising photography.

The 90cm cylinder has a diameter of 20cm, which is closed at the end to trap the strobe's output, bouncing it around inside the modifier to provide a soft 360-degree beam spread through its translucent surface. With a very clever design decision, ilkeen has provided two 90 x 25cm counter-reflectors to block off specific sections of the light-shaper to narrow its beam spread for selective lighting. A case is provided for storage and transport.



## Technical specifications

- Compatibility Any bowen mount heads
- Flash Range Maximum flash power: 3200 Ws
- Beam Spread Up to 360°
- Photometrics f/11-8/10 @ 6.56' (2 m), ISO 100
- Dimensions iPipe Light
- Length: 90cm)
- Diameter: 20cm
- Weight 3.8 lb (1.7 kg)



# Wall Boom (iBoom H3)

Photographers with mounting this tool on lightening stands are able to have a working table that moves horizontally and vertically.

Basically this tool with the accompany of holders and clamps can become a professional equipped studios for professional photographers.

Also helps you shoot commercial photography projects alone, without various assistants.



## Technical specifications

- Attaches To Studio Wall With Supplied Bracket
- Folds Against Studio Wall For compact Storage
- Maximum Height 130cm From Mounting Point
- Maximum Length 230cm From Mounting Point
- Closed Length 83 cm



## Shooting Table (iP-XB152025)

iP 3-XB152025 Shooting Table Bracket is a tool that consists of 3 metal plates with 15x15cm, 20x20cm, 30x30cm and a hardened aluminum connector for mounting on any kind of light stand.

This tool is capable of tolerating weight of implements, small, large and even heavy ones.

You can mount different products on this tool directly or use Plexiglasses to enlarge your shooting pad.



# Shooting Table (iP-XB152025)



## Technical specifications

1. It is processed with CNC techniques and thus good quality is ensured.
2. Hard Anodized
3. It can be combined with our iMagic Base Clamp and other iMagic Arm accessories to build custom configurations.
4. two 25mm ball attachments together.



There are a few holes on these plates that you can mount different materials like wood, lumber etc.

on Shooting Table Bracket is a useful tool that makes it very easy to focus the lightning on products.

photographers will be able to approach side lights to the subjects and replace it with their working tables.



# iMagic Arm

## Technical specifications

1. It is processed with CNC techniques and thus good quality is ensured.
2. Hard Anodized
3. It can be combined with our iMagic Base Clamp and other iMagic Arm accessories to build custom configurations.



iMagic Arm Ball CH (1/4"-20)

can be combined with iMagic Base Clamp and other iMagic Arm accessories to build custom configurations.



iMagic Arm Ball F (3/8"-16)

It is a component of our iMagic Arm lineup which has a 3/8"-16 fixed screw, non-slip rubber O Ring, and a 25mm ball.



iMagic Arm Ball F (1/4"-20)

It is a component of our iMagic Arm lineup which has a 1/4"-20 fixed screw, non-slip rubber O Ring, and a 25mm ball.



iMagic Extension Arm Ball 50

is a component of our Extension Arm lineup which has a 25mm ball on each measuring 76mm from center to center. Great for building custom arm configurations.



iMagic Extension Arm Ball 75

is a component of our Extension Arm lineup which has a 25mm ball on each measuring 100mm from center to center. Great for building custom arm configurations.



iMagic Base Clamp

is a component of our iMagic Arm lineup which clamps two 25mm ball attachments together.

# iMagic Arm

## Technical specifications

1. It is processed with CNC techniques and thus good quality is ensured.
2. Hard Anodized
3. It can be combined with our iMagic Base Clamp and other iMagic Arm accessories to build custom configurations.



## iMagic Arm Mount CH2

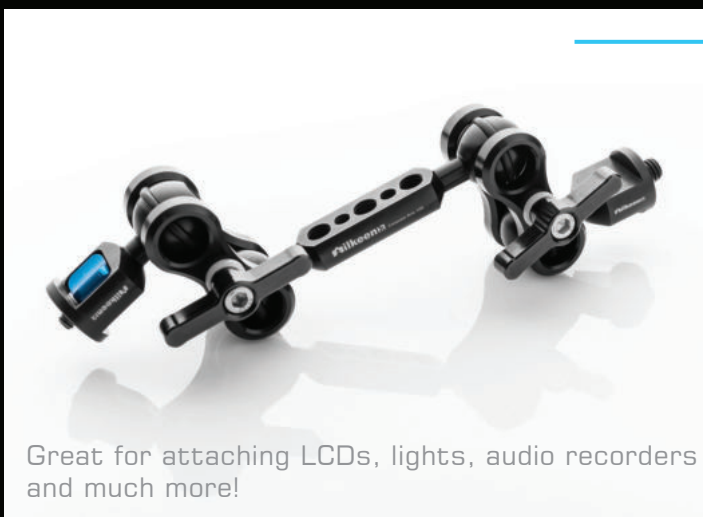
iMagic Arm Mount CH2 is an articulating arm with (CH 1/4"-20 to CH 1/4"-20) and non-slip rubber O Ring on each end and a center iMagic Base Clamp. This is a shorter version of the iMagic Arm and is ideal for keeping your LCDs, lights, audio recorders or accessory close to the camera body while still achieving a good range of motion.

iMagic Arm components are interchangeable so you can use this arm in conjunction with the other options we make like F 3/8"-16, Base Clamp, Hot Shoe, and Super Clamp. You can also change the center extension piece!

## iMagic Arm Mount CHF

iMagic Arm Mount CHF is an articulating arm with (CH 1/4"-20 to F 3/8"-16) and non-slip rubber O Ring on each end and a center iMagic Base Clamp. This is a shorter version of the iMagic Arm and is ideal for keeping your LCDs, lights, audio recorders or accessory close to the camera body while still achieving a good range of motion.

iMagic Arm components are interchangeable so you can use this arm in conjunction with the other options we make like F 1/4"-20, Base Clamp, Hot Shoe, and Super Clamp. You can also change the center extension piece!



## iMagic Arm Mount CHF75

iMagic Arm Mount CHF75 (CH 1/4"-20 to F 3/8"-16) is an articulating arm with two sets of 25mm double ball joints which allow a monitor or accessory to be positioned in just about any orientation. Tool-less 1/4"-20 knobs on each end with non-slip rubber O Ring make setup quick and easy. The actual length fully extended measures 265mm.

iMagic Arm components are interchangeable so you can use this arm in conjunction with the other options we make like F 1/4"-20, Base Clamp, Hot Shoe, and Super Clamp. You can also change the center extension piece!

Great for attaching LCDs, lights, audio recorders and much more!

# iMagic Arm



# iMagic Arm



## Light Stand (iA-260LS)

The **iA-260LS Stand comes** comes in 3 sections with 2 risers, giving you complete precision. It features springs so you can work quickly without worrying about catching your fingers or your gear. The wide footprint opens up to 97cm to keep your shots steady even on rougher grounds. It's impressive height range (110cm to 252cm) allows you capture new perspectives.



# Light Stand (iA-260LS)

## Description

ilkeen light stands are made of The finest aluminum alloy and are manufactured either through electro welding or extrusion, according to the highest quality standards.

ilkeen stands are safe and robust and are the perfect tool for today's demanding photographers and filmmakers working with studio equipment or out on location.



## What is included?

- |   |   |
|---|---|
| 1 | Compact 3 section stand with 2 risers supporting up to 9kg. |
| 2 | • Slotting parts for easy portability.                      |
| 3 | • Industry standard spigot and thread for compatibility.    |
| 4 | • Wide footprint for added stability                        |

## Technical specifications

5	Weight:	2750 gr
6	Spring:	yes
7	Top Attachment:	1/4" screw
8	Closed Length:	94 cm
9	Color:	Matt Black Electrostatic
10	Column Tube Diameter:	32, 28, 24, 22 mm
11	Footprint Max Diameter:	97 cm
12	Leg Cross Section:	Round
13	Leg Sections:	3
14	Material Base:	Iron
15	Material column:	Iron
16	Maximum Height:	252 cm
17	Max Payload:	9 kg
18	Min Height:	110 cm
19	Stand Leg Size:	Ø22mm



## Mini Light Stand (i-MLS4070)

ilkeen lighting stands are made of Aluminum or Iron and are manufactured either through electro welding or extrusion, according to the highest quality standards. ilkeen stands are safe and robust and are the perfect tool for today's demanding photographers and filmmakers working with studio equipment or out on location.



### Description

---

The Mini Stand comes in 2 sections with 1 risers, giving you complete precision. i-MLS4070 It features springs so you can work quickly without worrying about catching your fingers or your gear. The wide footprint opens up to cms 97 to keep your shots steady even on rougher grounds. Its impressive height range of 40cm to 70cm allows you to capture new perspectives



### Technical specifications

---

- Compact 2 section stand with 1 risers supporting up to 9kg.
- Slotting parts for easy portability.
- Industry standard spigot and thread for compatibility.
- Wide footprint for added stability.

## Mini Light Stand (i-MLS4070)



### Technical specifications

Weight	1140gr
Spring	Yes
Top Attachment	1/4" screw
Closed Length	44/5cm
Color	Matt Black Electrostatic
Column Tube Diameter	32, 28, 22 mm
Footprint Max Diameter	43/5 cm
Leg Cross Section	Round
Leg Sections	3
Material Base	Iron
Material column	Iron
Maximum Height	77cm
Min Height	49cm
Stand Leg Size	Ø22mm



## Monitor / EVF Holder



You may attach monitors of up to "9 and there is still some room left around! The Monitor/EVF Holder is fully compatible with all EVF's.

You can adjust the counterweight level of the Monitor/EVF Holder and work with any monitor or EVF regardless of its weight.



### ATTACHES TO ANY SHOE MOUNT

Monitor/EVF Holder can be used on all cameras/DSLRs and rigs.

You can attach the Monitor/EVF holder to hot/cold shoe mounts or to ports with 1/4"-20 screws.

### EASY TILT-UP / DOWN

The most frequently used monitor/EVF adjustments are tilt-up and tilt-down.

We designed the Monitor/EVF Holder to make this adjustment fast and easy.

You no longer need to loosen or tighten any screws. Simply move the monitor and it will stay exactly where you leave it.



# Monitor / EVF Holder

## ATTACH MORE THAN JUST YOUR MONITOR

Monitor/EVF holder has an extra shoe mount on its side to accommodate an LED light, or a microphone, or a wireless receiver, or any other accessory you may have that uses a shoe mount connection. You name it! There is also a 1/4"-20 port under the monitor plate to attach even more accessories on the Monitor/EVF Holder.

## COMPATIBLE WITH ALL MONITORS & EVF'S!

You may attach monitors of up to 9" and there is still some room left around! The Monitor/EVF Holder is fully compatible with all EVF's. You can adjust the counterweight level of the Monitor/EVF Holder and work with any monitor or EVF regardless of its weight.

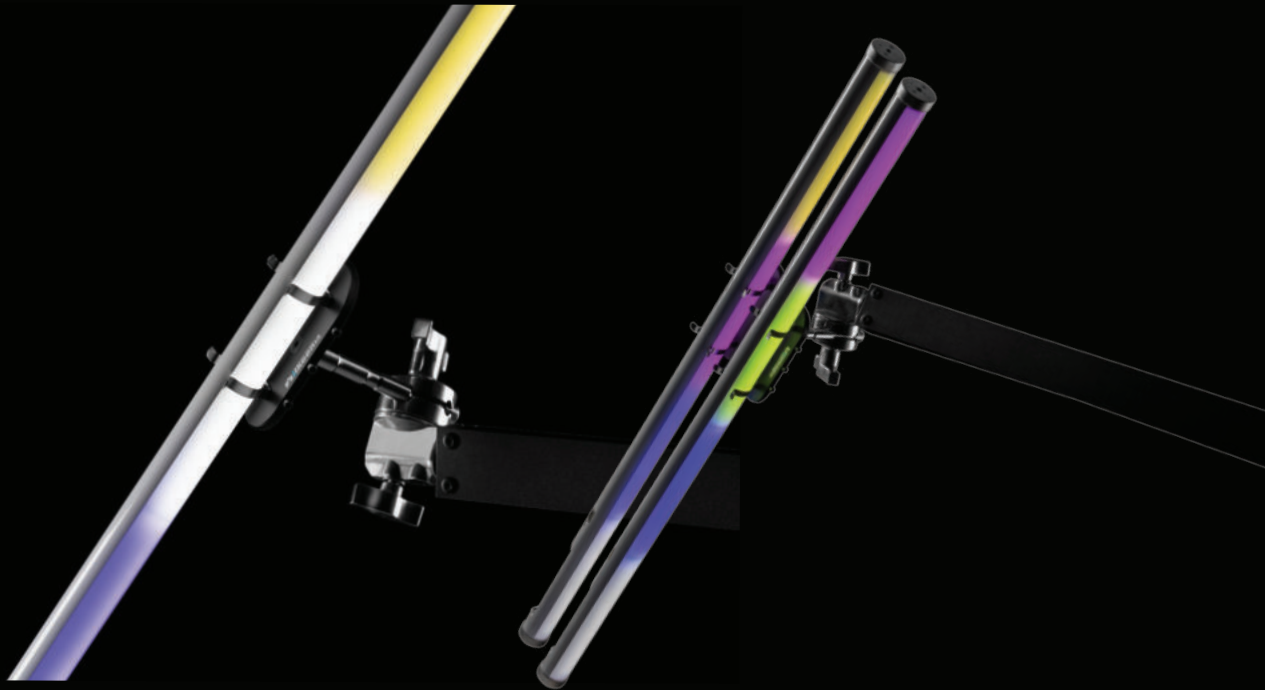


## Technical specifications

- Allows you to attach monitors on your camera.
- Ultra flexible design
- Attaches on the coldshoe mounts on your camera
- Has 1/4" threaded hole under it
- Does not block the input/outputs on your monitor
- Can be attached on tripods
- Carries Monitors up to 3.3 lb (1.5 kg)
- Easily tilts up-down with no knobs to tighten
- Has an extra cold shoe mount on its side
- Has extra 1/4" hole under monitor plate.
- 100% CNC machined aluminum body

# Quick Release Light Tube Holder (LTHA1T12)

**LTHA1T12** Constructed of high grade aluminum, with stainless steel hardware and chrome plated steel clips, these mounts will look and work great for years to come.



## Description

The LTHA1T12 quick release tube holder is the perfect way to quickly and professionally mount one T12 diameter Quasar Science or Astera tubes.

2' and 4' tubes mount with equal ease. The 5/8" baby pin quickly mounts to a C-stand arm, or any other mounting device with a 5/8" receiver.

Constructed of high grade aluminum, with stainless steel hardware and chrome plated steel clips, these mounts will look and work great for years to come.



# ilkeen Savigator

ilkeen Savigator is a fast and strong mounting clamp, capable of exerting very strong clamping force.



- This product has a dynamic articulated jaw that can fit firmly onto any oddly shaped object with the maximum cross section.
- The unique design of the jaw of this clamp makes it able to accommodate as many odd shapes as possible, whether they are round, square, diamond or any irregularly shaped object.
- The savigator clamp is tapped with two 3/8" and two 3/4" female threaded holes.
- This helps you mount multiple pieces of additional equipment simultaneously

# ilkeen Savigator



# CH Mini butterfly frame

ilkeen CH Mini butterfly frame is a unique durable product with multiple usages



ilkeen CH Mini butterfly frame is a unique durable product with multiple usages.

Having a telescopic frame, the size of this can be changed from 27.5' to 55' which makes this product the most useful, mobile diffuser for any photography genres, like portrait photography, food photography, advertising photoshoot etc. This product comes with a high quality diffuser which makes the softest light. This product can be equipped with diffusing as well as reflecting SCREENS.

For double diffusing effect special design of this product, makes this possible to join two CH Butterfly Frames and achieve the desired result.

Using a plexiglass in the adequate size for this product, makes the most useful, shooting table for different purposes.



# Savigator S Clamp

Pilkeen Savigator S Clamp with stud has unique, articulating jaws that can fit firmly onto any oddly shaped object. Whether mounting on round, square, or flat objects, the peak-and-valley design of the jaw allows for multiple points of contact, ensuring a strong grip every time.

The Savigator S Clamp with stud is fitted with a 3,5" long, 5/8" stud/baby pin and it is tapped with one 1/4"-20 and one 3/8"-16 female threaded hole on each jaw.

This makes it possible to mount multiple pieces of equipment on one clamp.

All Savigator S clamps feature an anodized aluminum surface for added durability and longevity.



## Light Stand Case

ilkeen Light Stand bags, are made of embroidered thick durable canvas.

Using the adjustable strap of this product, you can easily carry your light stands around.



## Top Table Kit

Ilkeon has put together Top Table kit including two light stands, a sand bag and a Savigator H clamp

Using this kit, you can mount the head of your camera tripod on the Top Table Cord utilizing a Savigator clamp, and have Top Table shoots.

This kit is the best choice for image makers, who tend to shoot vertically. Each item can be purchased individually too.





[ilkeen.com](http://ilkeen.com)



[@ilkeenproduct](https://www.instagram.com/ilkeenproduct)



[info@unitedbroadcast.com](mailto:info@unitedbroadcast.com)